

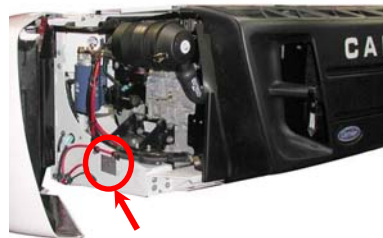
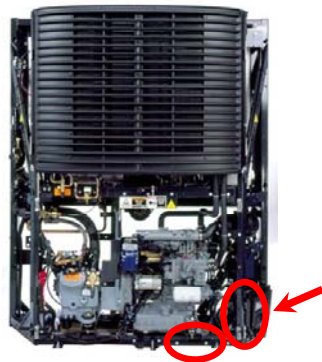
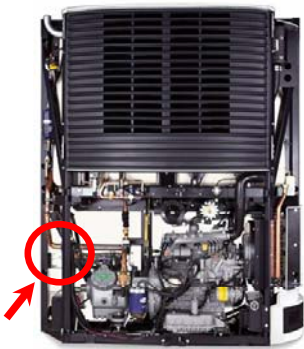
Carrier TRU Reporting for ARB Equipment Registration (ARBER)



Per TRU Advisory 08-06-R2, you need the unit make, model, model year and serial number to register the TRU. Registration is mandatory for California based fleets and voluntary for non-California based fleets.

STEP 1: ID your Fleet

Locating the TRU Serial Number



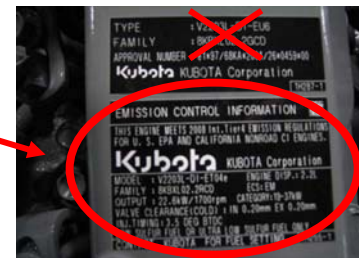
Unit Serial Number Label

STEP 2: ID your Engine

Locating the Engine Emissions Labels



Emissions Labels



STEP 3: Register with CARB by March 16, 2009

Fill Out: TRANSPORT REFRIGERATION UNIT ATCM MODEL-ENGINE-COMPLIANCE INFORMATION FORM SSD/EAB-FORM #TRU-MEC (#30)

http://www.arb.ca.gov/arber/documents/trudocs/tru_mec_01_09v4.pdf

Enter TRU Unit Information

TRU/TRU Generator Set Unit Information *indicates required field

Provide TRU/TRU Generator Set unit information here. Do not provide engine information on this page. The engine information must be entered on the compliance information page (page 3 of this form).

TRU/TRU Generator Set Unit Type* TRU TRU Generator Set

TRU/TRU Generator Set Unit Manufacturer*

TRU/TRU Generator Set Unit Model*

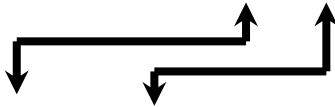
TRU/TRU Generator Set Unit Model Year*

TRU/TRU Generator Set Unit Serial Number*

TRU/TRU Generator Set Unit ID

Use the TRU serial number to determine the model year.

Sample Serial Number: **ABC12345678**



If the 1 st digit is	and the 3 rd digit is	TRU Model Year is
A thru G	A thru Z	2001 or earlier
H	A thru M	
H	N thru Z	2002
J	A	
J	B thru N	2003
J	P thru Z	2004
K	A or B	
K	C thru P	2005
K	R thru Z	2006
L	A thru C	
L	D thru R	2007
L	S thru Z	2008



Unit Serial Number Label

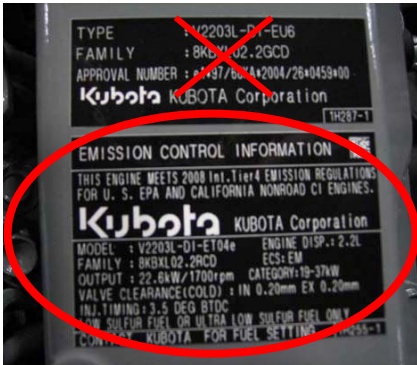
Enter TRU Engine Information

TRU Engine Information (all fields required)

TRU Engine Manufacturer Power Rating <25HP (<19kW) ≥25HP (≥19kW)

TRU Engine Model TRU Engine Model Year

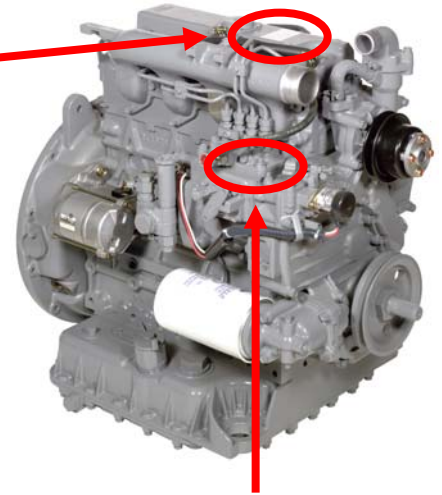
TRU Engine Serial Number



Engine Model & Power Rating



Serial Number



Alternate Serial Number location
 Stamped on engine block

Sample Serial Number: **8S1074**

Alphabetical letter or numerals	W	X	Y	1	2	3	4	5	6	7	8	9
Year	98	99	00	01	02	03	04	05	06	07	08	09

Use the Engine serial number to determine the model year

STEP 4: Contact your local Carrier Transicold Dealer

www.trucktrailer.carrier.com
www.transportparts.carrier.com

